



3, 1-3 Manson Place, South Kensington, London, SW7 5LT  
**£825,000**



## 3, 1-3 Manson Place, South Kensington, London, SW7 5LT

**£825,000**

Nestled in the heart of South Kensington, 1-3 Manson Place presents an exceptional opportunity to acquire a splendid flat that combines modern living with the charm of one of London's most desirable neighbourhoods. Spanning an impressive 998 square feet, this well-appointed residence features two spacious bedrooms, making it ideal for families or professionals seeking a comfortable living space.

The flat boasts a welcoming reception room, perfect for entertaining guests or enjoying quiet evenings at home. The two bathrooms provide convenience and privacy, ensuring that all residents can enjoy their own space.

The location itself is a true highlight, with an array of shops, restaurants, and cultural attractions just a stone's throw away. South Kensington is renowned for its vibrant atmosphere and excellent transport links, making it easy to explore the rest of the city.

This flat is not just a home; it is a lifestyle choice, offering both comfort and convenience in one of London's most sought-after areas. Whether you are looking to invest or seeking a new place to call home, 1-3 Manson Place is a property that deserves your attention.

Leasehold: 175 years remaining  
Ground rent: £0pa  
Service charge: Approx £5200pa

## Description

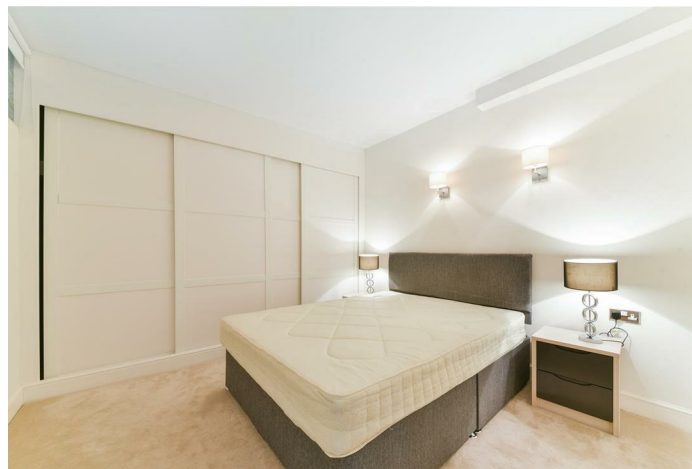
With 2 bedrooms, a semi open plan kitchen and dining room, spacious living room, 2 bathrooms and is situated on the lower ground floor with its own courtyard patio area.

With the ability to apply for on-street permit parking (at an additional cost), and benefits from being only a few minutes to the underground station at South Kensington.

Available chain free.

## Situation

Located in Manson Place, is this modern two bedroom, two bathroom apartment in South Kensington in SW7.

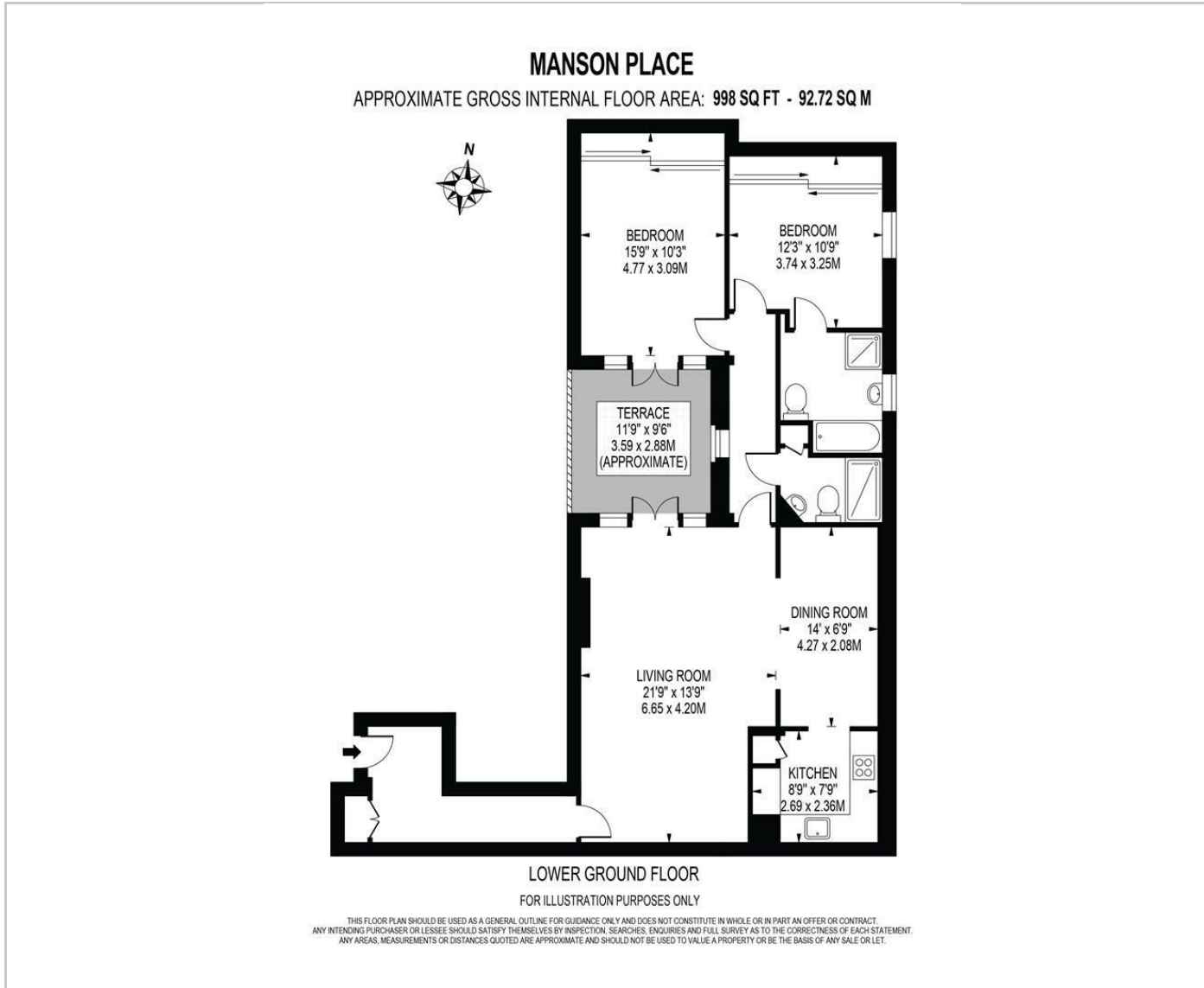


null

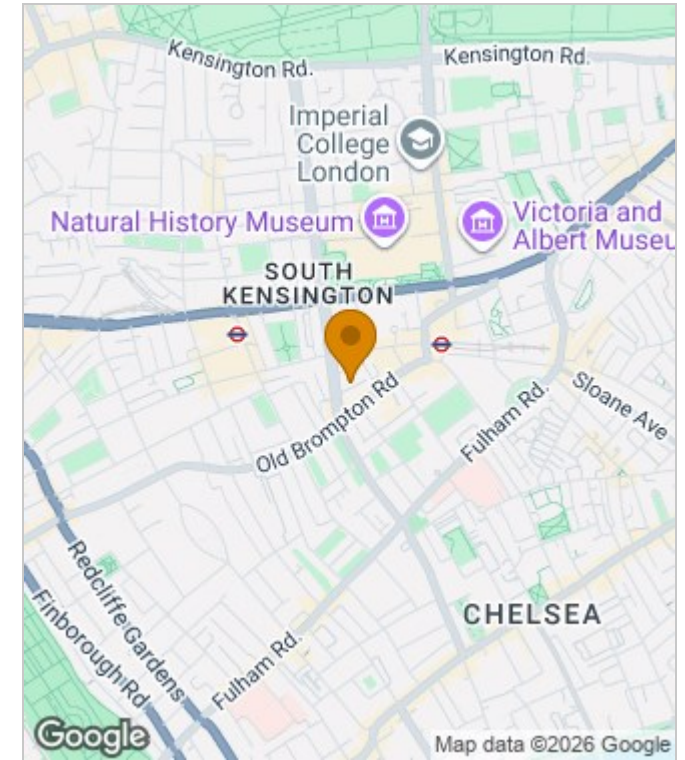
Council Tax Band: G

Available:

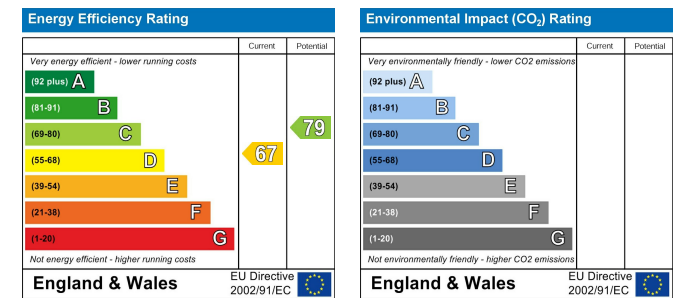
## Floor Plans



## Area Map



## Energy Performance Graph



These particulars, whilst believed to be accurate are set out as a general outline only for guidance and do not constitute any part of an offer or contract. Intending purchasers should not rely on them as statements of representation of fact, but must satisfy themselves by inspection or otherwise as to their accuracy. No person in this firm's employment has the authority to make or give any representation or warranty in respect of the property.

The Nucleus Brunel Way, Dartford, Kent, DA1 5GA

Tel: 02081758868 Email: [property@lyhpropertyconsultants.com](mailto:property@lyhpropertyconsultants.com) [www.lyhpropertyconsultants.com](http://www.lyhpropertyconsultants.com)